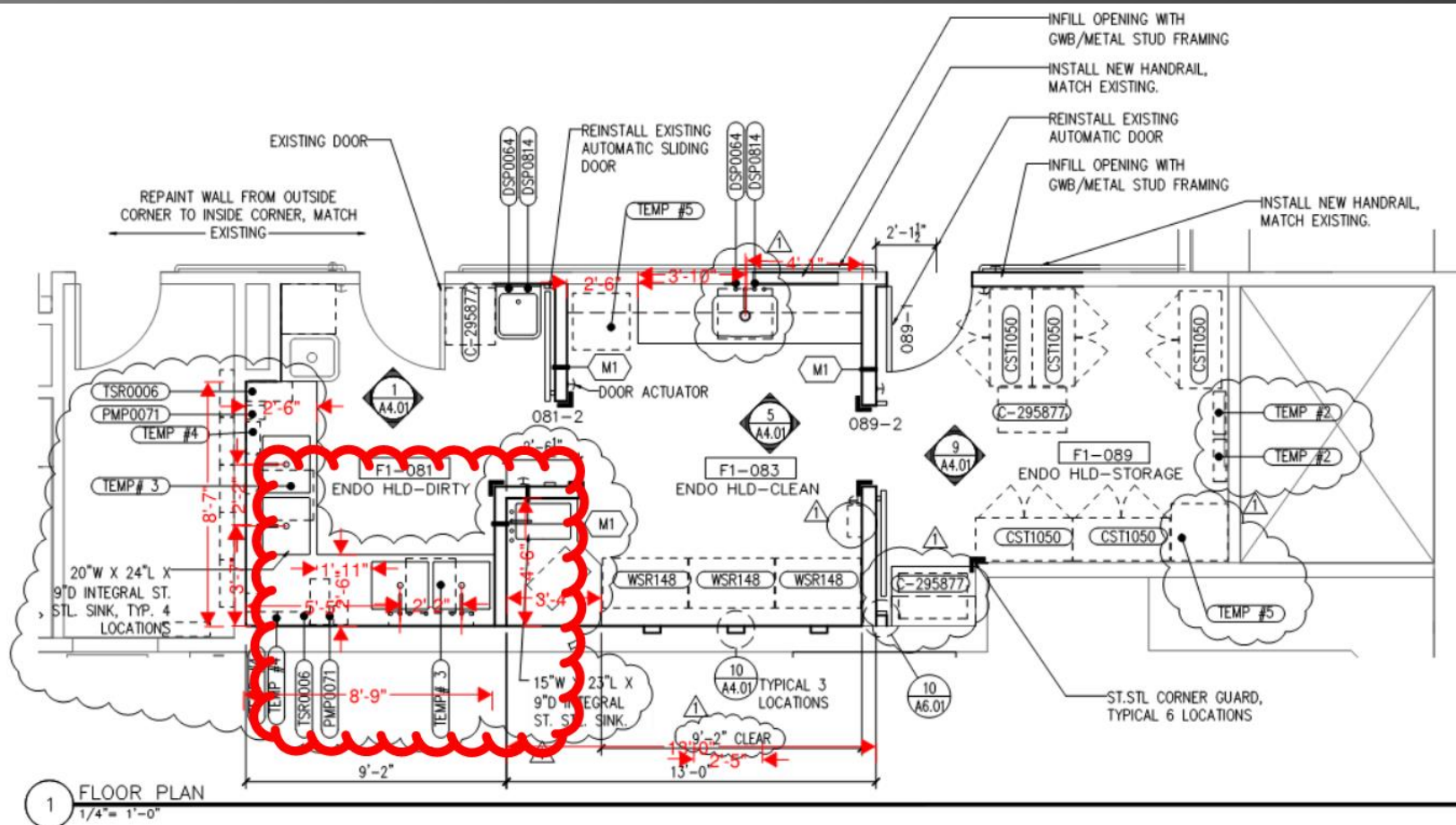




# Stainless Steel Sink Construction Sequence



The process begins with an idea and a scaled drawing



The process is underway with a blank sheet of stainless steel and the layout drawing





The countertop is the first step



The backsplash and edges are formed. The countertop sink location are marked in preparation for cutting.



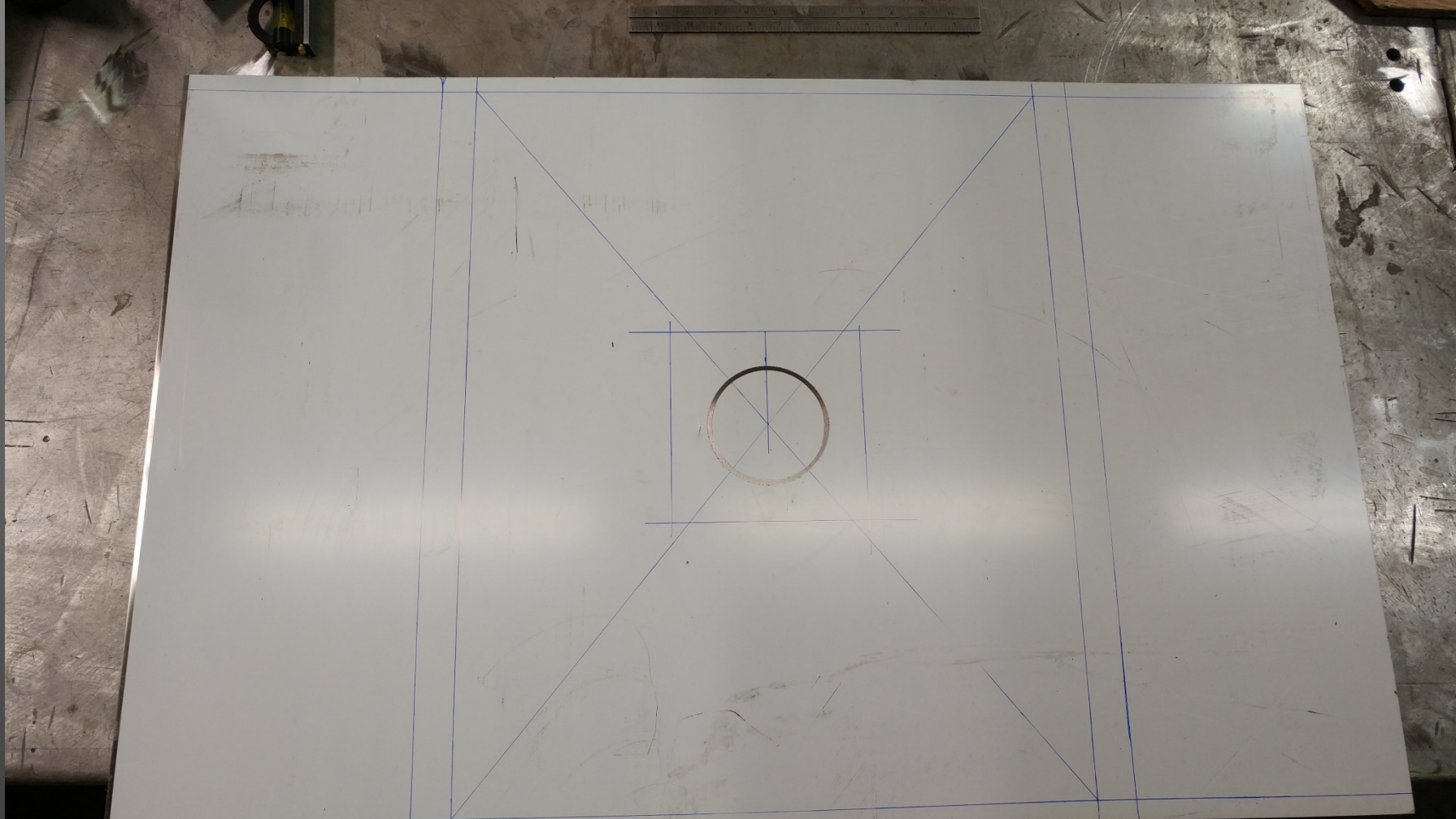


The countertop is cut out for the  
sinks



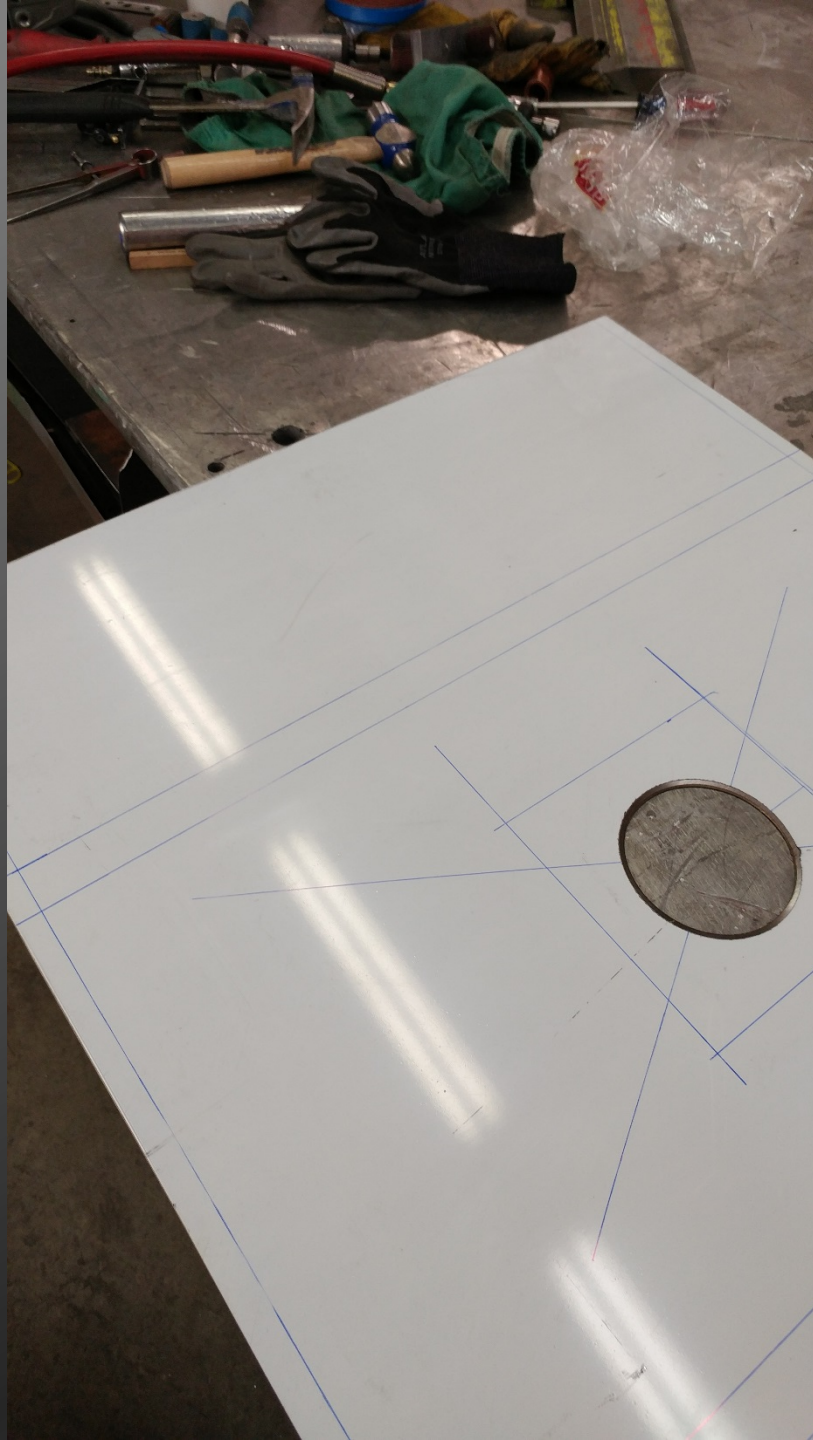
The counter top is ready and waiting  
for the matching sinks





The sink layout is underway with blank piece of material and layout dimensions.



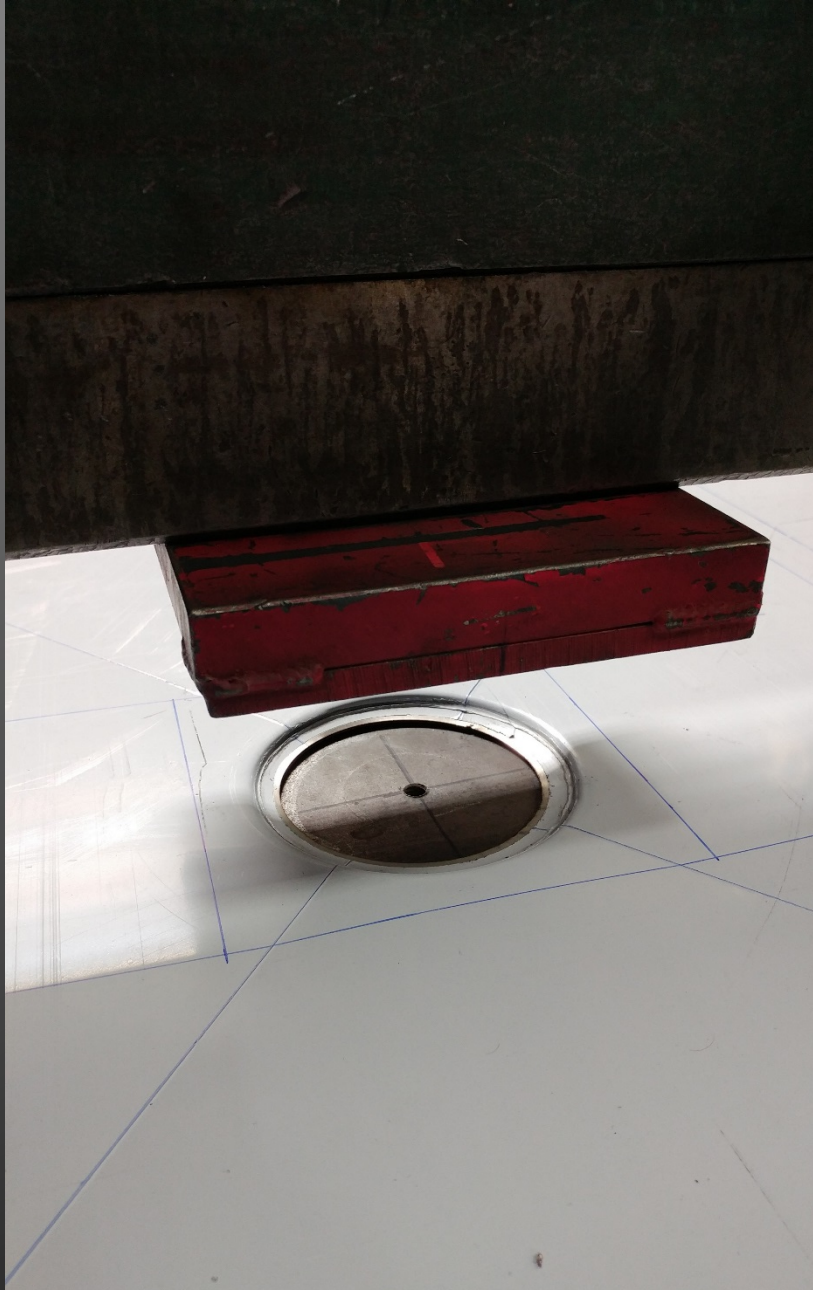


The first cut is made; the hole for the drain in the sink.



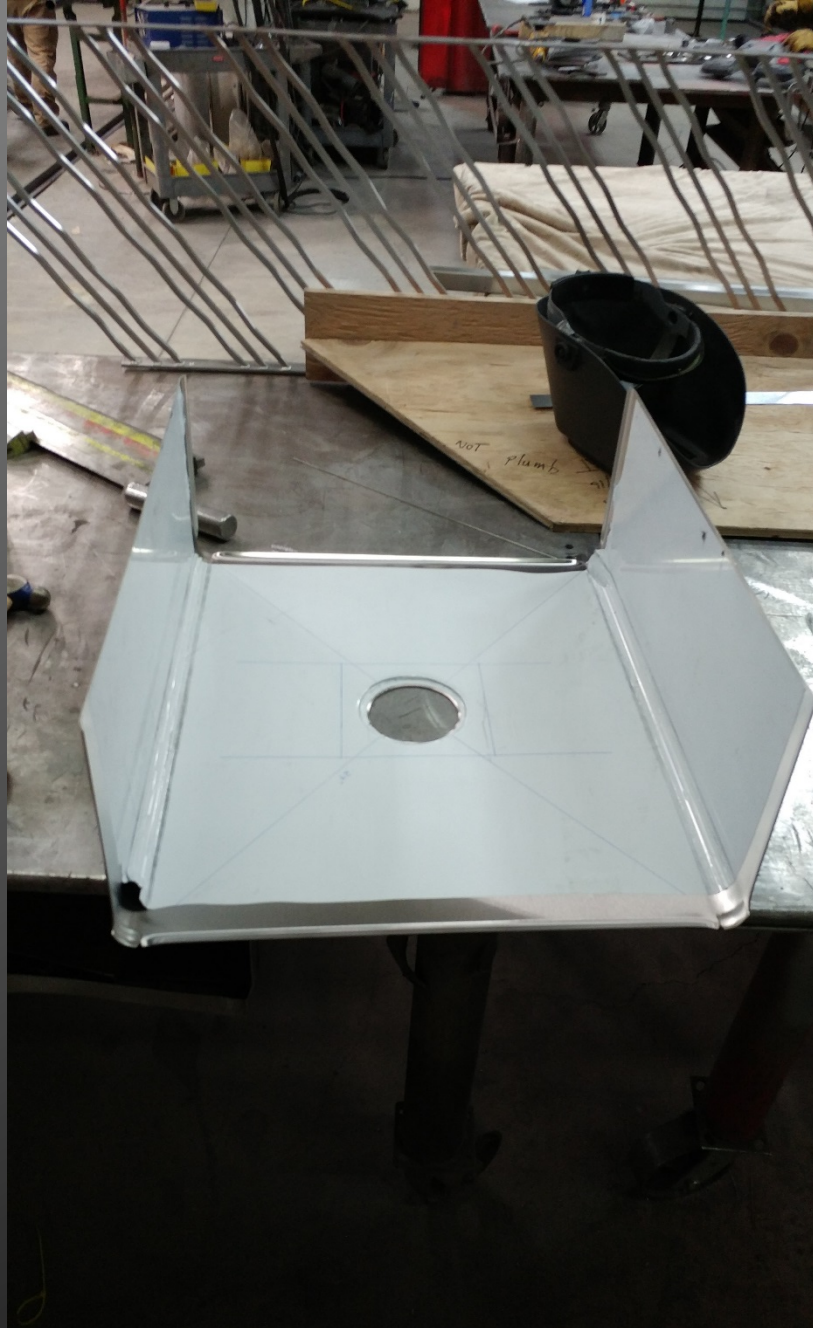
A punch and die form the standard size drain hole.





The sink drain is formed into the bottom of the sink.





Forming the sing bowl is up next. The radius edges of the bottom and sides are starting to take shape



The opposite side pieces are formed and ready to be welded to the main sink blank





Welding out the sink bottom begins



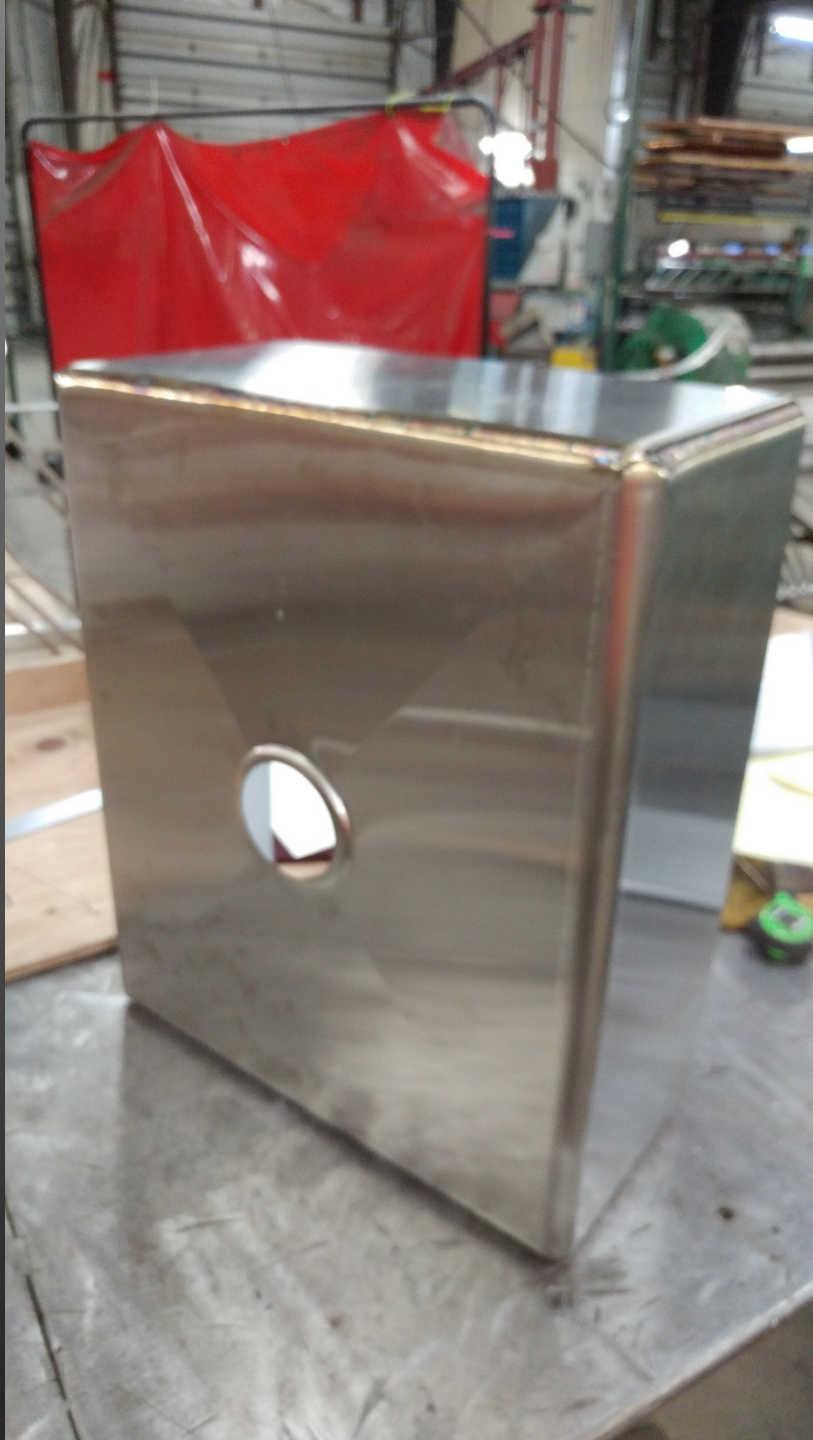


The welds are nearing completion and nearly ready for polishing.



The welds are polished smooth. The bottom appears to be nearly seamless. The white peel coat protective covering remains.





The finished sink is ready to be united with its matching counter top.





The sink is welded to the countertop.



More smoothing and polishing of the welds.





Welding and polishing are complete.  
The white peel coat covering remains  
to protect the main surfaces.

# The Finished Sink



The installed sink fits neatly into to allotted location and plumbed for operation.



# Finished Sink



Completed sink in operation.